

From concept to completion in structural glass

Glass installations in heritage buildings look deceptively simple.



Bespoke glass screen at the Dimbleby Cancer Care unit

Using glass as a structural material provides the optimum solution when renovating centuries old buildings to meet current requirements and regulations.

Glass ensures the original architecture remains paramount, without physical or visual impact to the existing structure, whilst achieving modern functionality.

Bespoke glass screens for example are a practical way to divide spaces; creating meeting rooms, draught free entrance lobbies, or porches; minimising heat loss and retaining light flow.

The beauty of glass is the apparent simplicity of the result, often at variance to the level of complexity and specialist knowledge required to achieve it.

Heritage glass specialists Ion Glass will take your ideas from concept to completion, providing a full service solution, with the benefit of unrivalled experience in the heritage sector.

'Many of our clients know what they want to achieve but don't have the specialist glass knowledge required to take their ideas beyond the 'rough sketch' stage,' said Ion MD Peter Hazeldean. 'Fortunately, our teams have a wide breadth of in-depth knowledge and experience.'

Glass screen at Guy's
Guy's Hospital has a long and illustrious heritage.

Ion Glass recently installed a curved glass screen at the Dimbleby Cancer Care Unit, on behalf of Nicholas Dimbleby and the Dimbleby Trust.

The concept was presented to Ion as a hand drawn sketch by Nicholas



Dimbleby. The flowing curves were intended to separate an area to provide privacy for patients but once the requirements had been agreed everything else was handed over to Ion's teams of experts.

In addition to ensuring the opposing curves flowed cohesively together without creating a step, the bespoke metal fixing channels had to be perfectly designed and manufactured to fit the existing ceiling grids and walls.

Ion designed and commissioned the curved glass, produced the bespoke metalwork, fixtures and fittings and installed the screens over a single weekend when the centre was closed for patients.

Deceptively simple, the finished result looks stunning, fully achieving the brief.

'At Ion we understand the importance of discussing every

project in detail with the whole team' continued Peter Hazeldean, 'We all need to fully understand the design parameters and how best to achieve the results. With heritage projects there are often other implications to consider, such as whether or not the result meets the strict requirements of organisations such as English Heritage, the Church Conservation Trust or the Victorian Society.'

Our technicians will produce the drawings, ensuring they meet all the relevant structural requirements and overcome any issues with regard to the installation - there is little point in specifying oversized glass panels for a screen if they are too big to get into the building!

We manage everything from the size and thickness of the glass panels to the most appropriate brackets, hinges, handles or handrails. We also manage all the logistics, including organising cranes and any lifting gear required.'

Martello Tower

A recent project on the South Coast involved installing a sweep of frameless glass balustrade at the top of a Martello Tower, to create a mezzanine floor with stunning

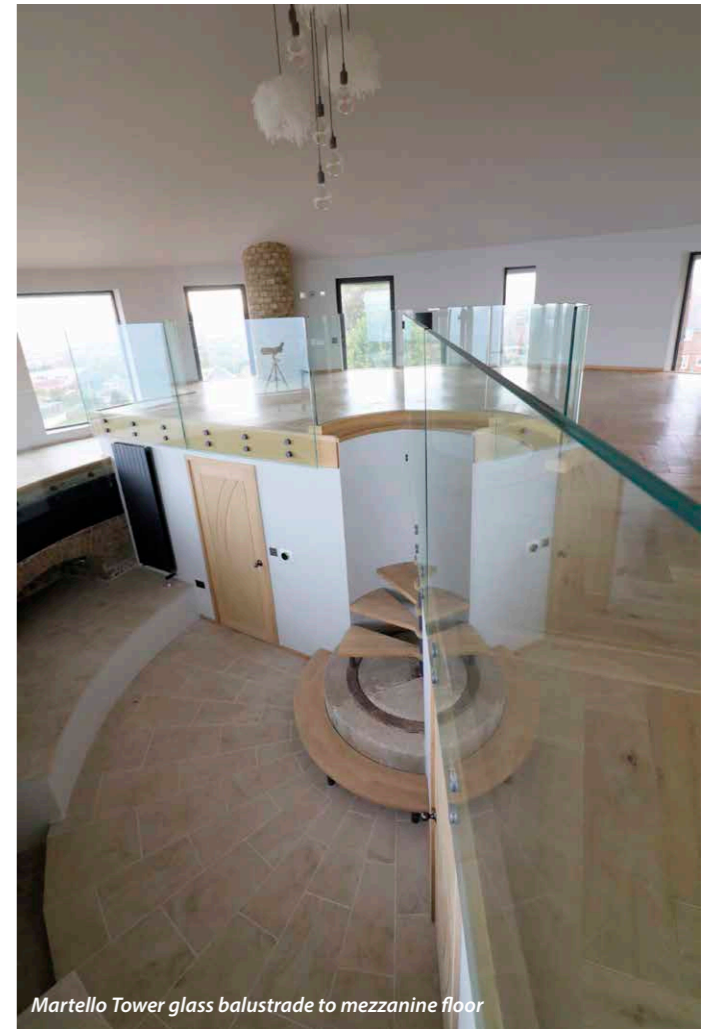
views of the English Channel. A combination of curved and straight glass panels followed the shape of the tower and the tight curve at the top of the spiral staircase.

Access to the room is via a narrow staircase built into the walls of the tower, so all the glass had to be lifted up the exterior of the building and manoeuvred through a window. Each panel had to accommodate not just the curves and changes in levels of the mezzanine floor but also the size of the access window.

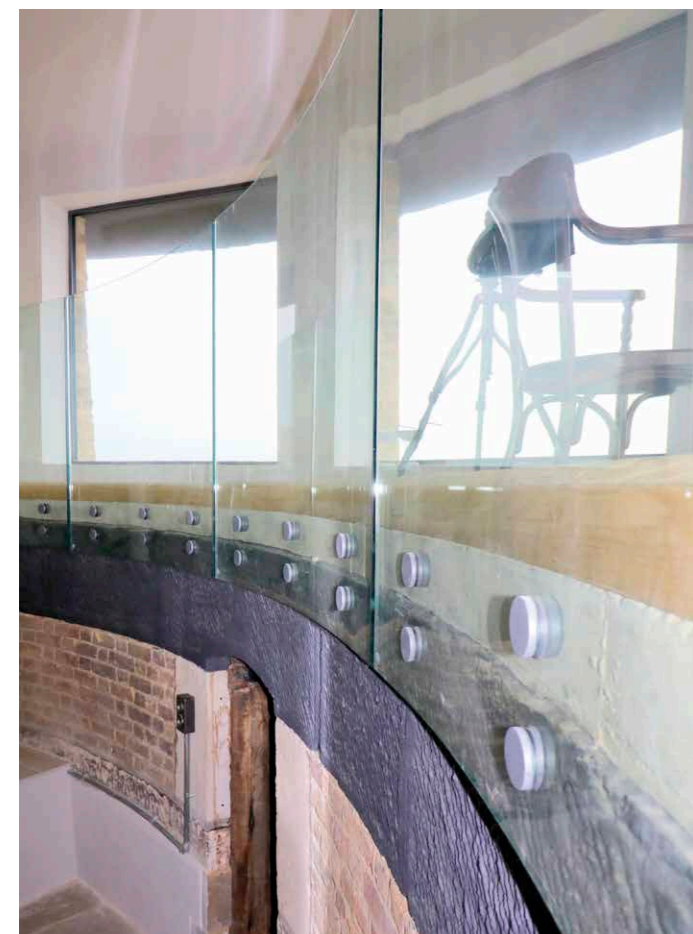
'Taking a project from concept to completion makes full use of Ion's expertise. Even for architects who have already produced detailed designs, our in-depth knowledge ensures the finished project is functional, meets all structural requirements and is fully compliant.'

If you have a structural glass project you'd like to discuss, visit www.ionglass.co.uk, call Ion Glass on 0345 658 9988, or email them via info@ionglass.co.uk.

Their technicians will be pleased to provide their help and advice.



Martello Tower glass balustrade to mezzanine floor



Bolted glass balustrade Martello Tower



Ion Glass specialise in bespoke architectural and structural glass installations for ecclesiastical and heritage buildings

www.ionglass.co.uk 0345 658 9988

